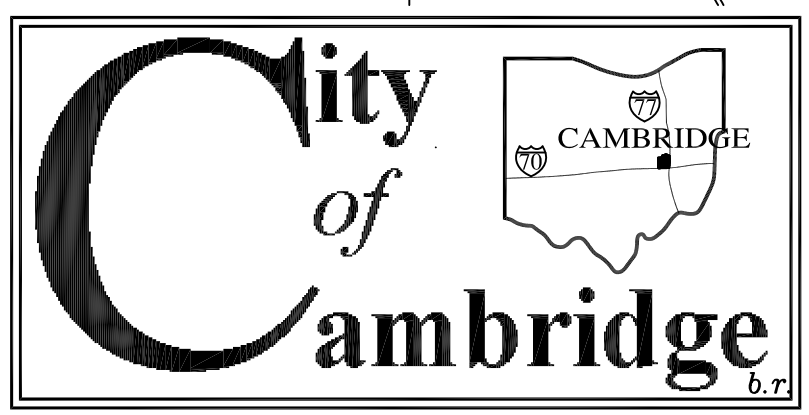
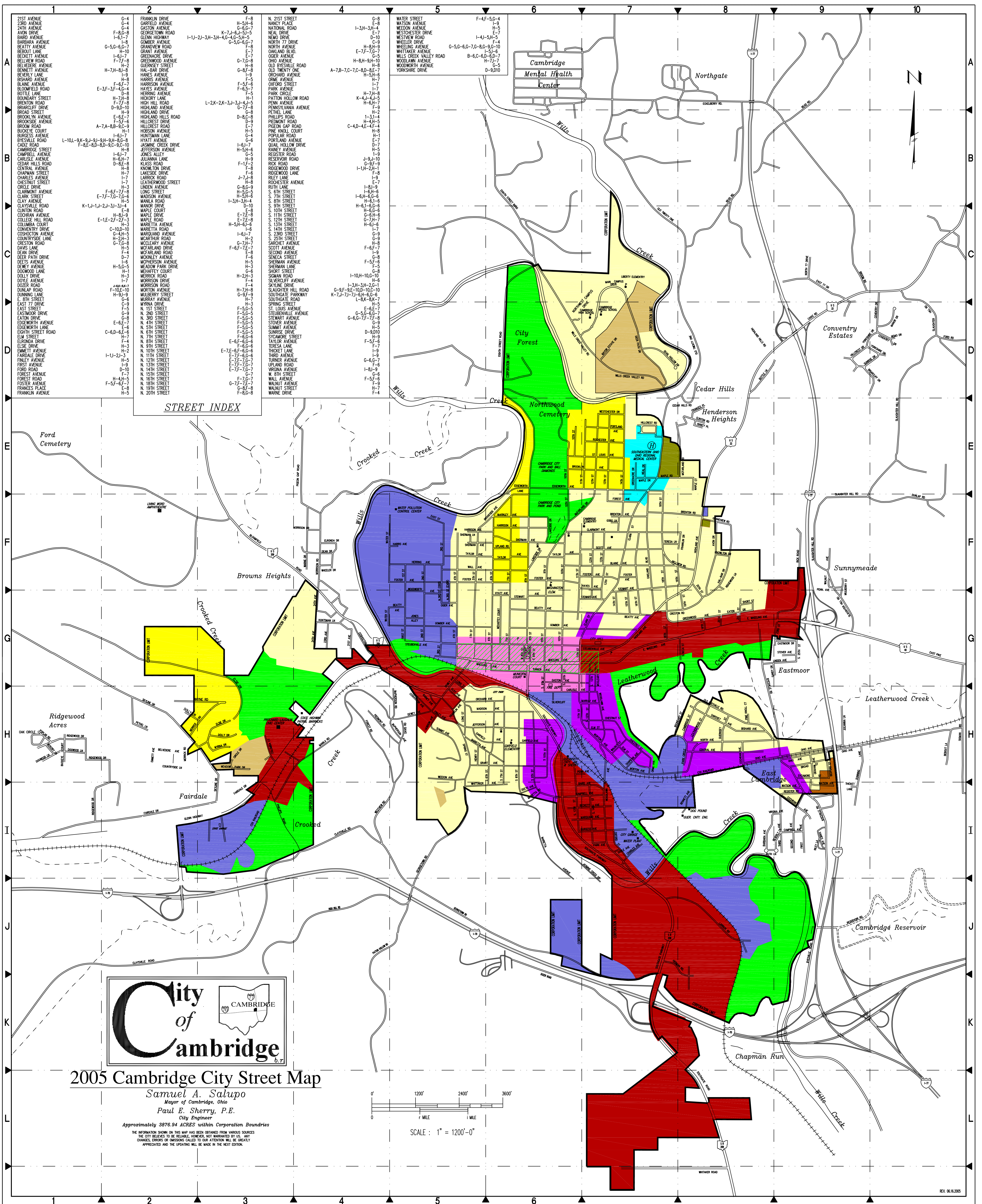


THE CITY OF CAMBRIDGE ZONING MAP

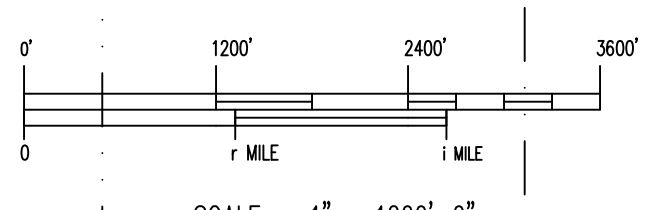


2005 Cambridge City Street Map

Samuel A. Salupo
Mayor of Cambridge, Ohio
Paul E. Sherry, P.E.
City Engineer

Approximately 3876.94 ACRES within Corporation Boundaries

THE INFORMATION SHOWN ON THIS MAP HAS BEEN OBTAINED FROM VARIOUS SOURCES. THE CITY BEARS NO RESPONSIBILITY FOR THE ACCURACY OF THE INFORMATION. ANY CHANGES, ERRORS OR OMISSIONS CALLED TO OUR ATTENTION WILL BE CORRECTED AS APPROPRIATE AND THE REVISION WILL BE MADE IN THE NEXT EDITION.



Boundaries of zoning districts are intended to follow property lines as reflected on the applicable plat maps. Where zoning district boundaries are shown as being parallel to a right-of-way, those lots that have frontage on such right-of-way are intended to be within such a zoning district.

ZONING DISTRICTS

- OS Open Space District
- SF-1 Single-Family Residential District
- SF-2 Single-Family Residential District
- MF Multiple-Family Residential District
- MHP Manufactured Home Park District
- NC Neighborhood Commercial District
- RM Residential/Medical District
- OMC Office/Medical/Commercial District
- CBD Central Business District
- GSC General Service Commercial District
- CI Community Industrial District
- PD Planned Development District
- DHD Downtown Historic District

Mayor _____ Date _____
Attest Clerk _____ Date _____